

**SmartDraft 23** is a powerful drafting toolbox for AutoCAD 2018 - 2024, Map 3D 2018 - 2024, Civil 3D 2018 - 2024, and BricsCAD v21 - v24.

**Note:** Will **not** run in any version of AutoCAD LT.  
SmartDraft, Inc. Copyright (c) 1989-2024

**Important:** The installation does not automatically load the SmartDraft menu. After installation, open AutoCAD or BricsCAD, start the CUILOAD command, and select the SmartDraft menu in the <installation folder> per the Setup instructions below.

### SmartDraft Manual

The SmartDraft manual, in PDF format, is in the SmartDraft's installation folder. SmartDraft 23.pdf

### SmartDraft Upgrade Information

If you have customized SmartDraft to follow your own CAD standards, review the changes to the Customization Template and Style files and make any of the changes necessary to the files in your Customization Templates.

### Setup

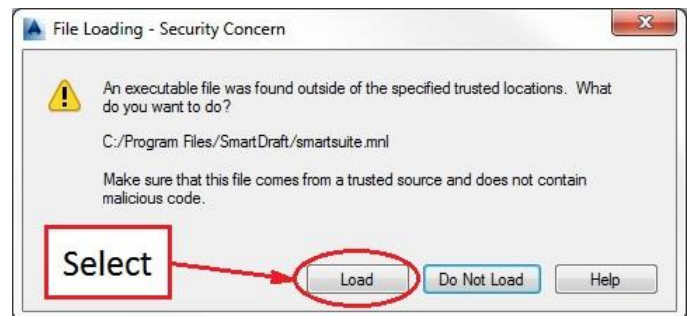
To run SmartDraft within AutoCAD or BricsCAD, you must load a SmartDraft menu.

To load the SmartDraft menu:

#### AutoCAD Civil 3D, AutoCAD, or AutoCAD Map 3D 2018 - 2024

1. Start AutoCAD
2. Type: **cuiload** and press ENTER
3. Select the **Browse** button and go to the SmartDraft installation folder:
4. Select one of the cuix files below:  
Suite, PConnect, and HEC-RAS Tools: SmartSuite.cuix  
Survey and PConnect: SmartSurvey.cuix  
PConnect only: SmartPConnect.cuix  
HEC-RAS Tools only: SmartHydro.cuix  
Construction Notes only: SmartCNote.cuix
5. Select the **Load** button

**Warning:** When you load the SmartDraft menu for the first time, the follow File Loading - Security Concern dialog box may appear. If it does, you must select the Load button for SmartDraft to work correctly. Note: The listed file could be, smartsuite.mnl, smarthydro.mnl, smartsurvey.mnl, smartpconnect.mnl, or smartcnote.mnl based on the selected SmartDraft menu file.



#### BricsCAD v21 to v24

1. Start BricsCAD
2. Type: **cuiload** and press ENTER
3. Select the [...] button and go to the SmartDraft installation folder:
4. Select **one** of the cui files below:  
Suite, PConnect, and HEC-RAS Tools: SmartSuiteBC.cui  
Survey and PConnect: SmartSurveyBC.cui  
HEC-RAS Tools only: SmartHydroBC.cui  
PConnect only: SmartPConnectBC.cui  
Construction Notes only: SmartCnoteBC.cui
5. Select the **Load** button

**To enter licensing information (authorize the software) either:**

**Single seat license:**

At the AutoCAD or BricsCAD Command prompt follow the steps below.

Command: **SmartAbout** ENTER

From the **About** dialog box select the **Authorization** button.

**Company/Name:** Enter the company or owner's name to be associated with the license.

**Serial Number:** Enter the supplied serial number

**Authorization Code:** Enter the supplied authorization code

or

**Site license:**

Copy the provided license file (SmartDraft23.lic) to the SmartDraft's installation folder. The default installation folder is C:\Program Files\SmartDraft

## **SmartDraft Customization instructions**

### **Customization Templates**

Customization Template files for the program are in the program's installation subfolder \Template  
Users must have read and write rights to this folder and subfolders to edit or customize SmartDraft.

The customization folder \Template can be located and/or named as needed on your system. If it is not placed in the default location, the PROJDIR= pointer in the SMARTDRAFTSETUP.INI file must be edited to reflect change in the location and/or name.

### **Sample: SMARTDRAFTSETUP.INI**

[Program]

TemplateFdlr=C:\ProgramData\SmartDraft\Template

Customization Template folder after the =